

PLEASE CHECK WWW.MOLEX.COM FOR LATEST PART INFORMATION

Part Number: [0355721500](#)
Status: **Active**
Description: 2.50mm (.098") Pitch Wire-to-Wire and Wire-to-Board Housing, Positive Lock, Nylon 6/6 Material, 15 Circuits, Natural

Documents:

[Drawing \(PDF\)](#) [RoHS Certificate of Compliance \(PDF\)](#)
[Product Specification PS-35572-001 \(PDF\)](#)

General

| | |
|----------------|-----------------------|
| Product Family | Crimp Housings |
| Series | 35572 |
| Product Name | N/A |

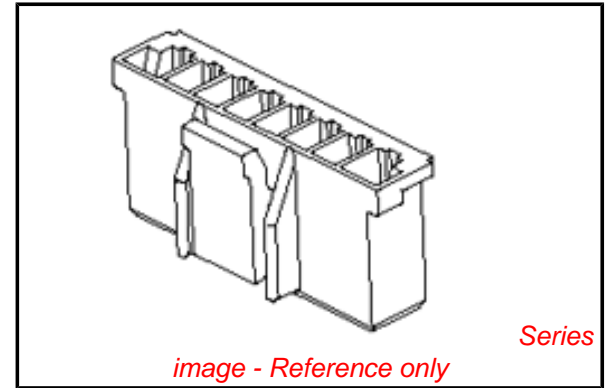
Physical

| | |
|-------------------------------|-----------------|
| Breakaway | No |
| Circuits (maximum) | 15 |
| Gender | Female |
| Glow-Wire Compliant | No |
| Keying to Mating Part | None |
| Lock to Mating Part | Yes |
| Number of Rows | 1 |
| Packaging Type | Bag |
| Panel Mount | No |
| Pitch - Mating Interface (in) | 0.098 In |
| Pitch - Mating Interface (mm) | 2.50 mm |
| Temperature Range - Operating | -40°C to +105°C |

Material Info

Reference - Drawing Numbers

| | |
|-----------------------|--------------|
| Product Specification | PS-35572-001 |
| Sales Drawing | SD-35572-001 |



EU RoHS

China RoHS

Compliance Status

Not Reviewed

REACH SVHC

Not Reviewed

Halogen-Free

Status

Not Reviewed

Need more information on product environmental compliance?

Email productcompliance@molex.com
 For a multiple part number RoHS Certificate of Compliance, [click here](#)

Please visit the [Contact Us](#) section for any non-product compliance questions.

Search Parts in this Series

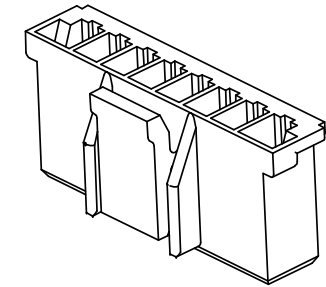
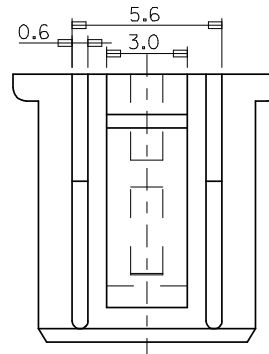
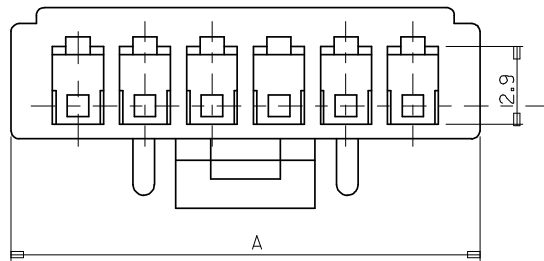
[35572Series](#)

Mates With

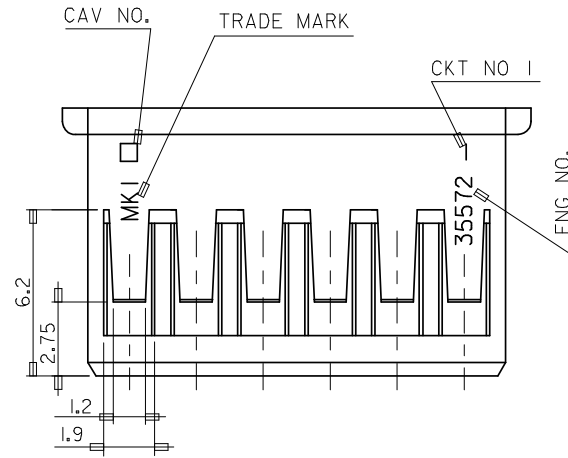
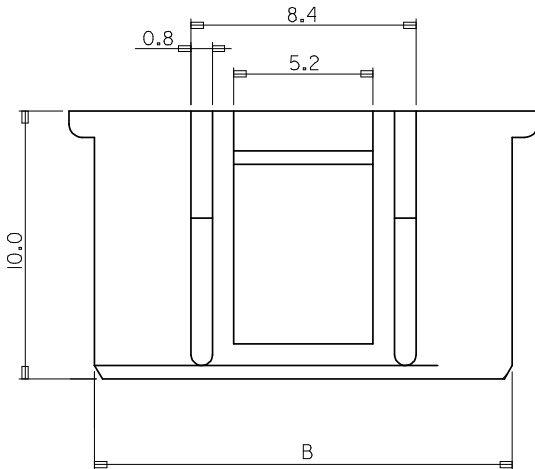
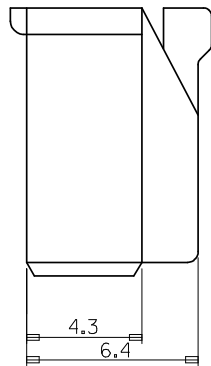
[35312](#) Vertical Shrouded Header, [35184](#) Plug Housing

Use With

[57915](#) Wire-to-Board Terminal

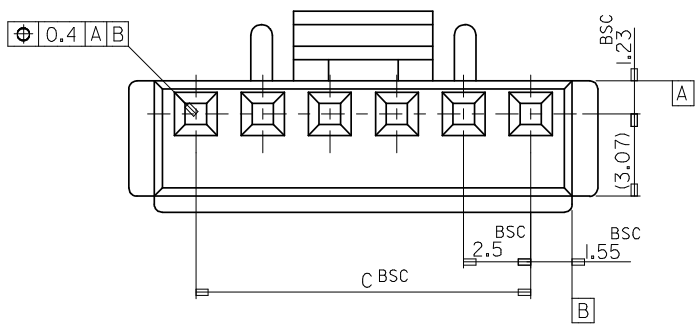


3 CKT ONLY



NOTE

1. MATERIAL : PBT UL94V-0 (VALOX 3IOSEO)
2. COLOR : 0 : NATURAL
2 : RED (ONLY 4P,6P,10P)
3. USED TERMINAL : 57915-9002/8001
4. MATED : 35312/35184



| | | | | | | | | | |
|------|------|------|------------|-----|------|------|------|------------|-----|
| | | | | | 20.0 | 23.1 | 25.0 | 35572-0900 | 9 |
| 35.0 | 38.1 | 40.0 | 35572-1500 | 15 | 17.5 | 20.6 | 22.5 | 35572-0800 | 8 |
| 32.5 | 35.6 | 37.5 | 35572-1400 | 14 | 15.0 | 18.1 | 20.0 | 35572-0700 | 7 |
| 30.0 | 33.1 | 35.0 | 35572-1300 | 13 | 12.5 | 15.6 | 17.5 | 35572-060* | 6 |
| 27.5 | 30.6 | 32.5 | 35572-1200 | 12 | 10.0 | 13.1 | 15.0 | 35572-0500 | 5 |
| 25.0 | 28.1 | 30.0 | 35572-1100 | 11 | 7.5 | 10.6 | 12.5 | 35572-040* | 4 |
| 22.5 | 25.6 | 27.5 | 35572-100* | 10 | 5.0 | 8.1 | 10.0 | 35572-0300 | 3 |
| C | B | A | ENG NO. | CKT | C | B | A | ENG NO. | CKT |

| | | | | | | | | | | | | | | | | | | | | | |
|---|-----------------------------|---|-------------------------------------|-----------------------------|------|----------|-------|-------|----------|-------|-------|----------|-------|-------|---------|-------|-------|-----------------------------------|---------------------|-------------------------------|-------------------------------|
| REVISED EC NO: KOR2008-0109 DRWN: JHPARK01 2008/01/02 CHKD: WY. YANG 2008/01/02 APPR: YUNS IKK IM 2008/01/02 | QUALITY SYMBOLS | GENERAL TOLERANCES (UNLESS SPECIFIED) <table border="1"> <tr> <td></td> <td>mm</td> <td>INCH</td> </tr> <tr> <td>4 PLACES</td> <td>± ---</td> <td>± ---</td> </tr> <tr> <td>3 PLACES</td> <td>± ---</td> <td>± ---</td> </tr> <tr> <td>2 PLACES</td> <td>± ---</td> <td>± ---</td> </tr> <tr> <td>1 PLACE</td> <td>± 0.2</td> <td>± ---</td> </tr> </table> | | mm | INCH | 4 PLACES | ± --- | ± --- | 3 PLACES | ± --- | ± --- | 2 PLACES | ± --- | ± --- | 1 PLACE | ± 0.2 | ± --- | DIMENSION STYLE MM ONLY | SCALE 5:1 | DESIGN UNITS METRIC | THIRD ANGLE PROJECTION |
| | | mm | INCH | | | | | | | | | | | | | | | | | | |
| | 4 PLACES | ± --- | ± --- | | | | | | | | | | | | | | | | | | |
| | 3 PLACES | ± --- | ± --- | | | | | | | | | | | | | | | | | | |
| 2 PLACES | ± --- | ± --- | | | | | | | | | | | | | | | | | | | |
| 1 PLACE | ± 0.2 | ± --- | | | | | | | | | | | | | | | | | | | |
| DESCRIPTION 2.5 PITCH W/B CONN HOUSING | DRAWN BY HS. SHIN | DATE 2000/02/17 | MOLEX INCORPORATED | | | | | | | | | | | | | | | | | | |
| REVISIONS DRAFT WHERE APPLICABLE MUST REMAIN WITHIN DIMENSIONS | CHECKED BY JK. OH | DATE 2000/02/17 | SD35572.DGN | | | | | | | | | | | | | | | | | | |
| APPROVED BY CW. LEE | DATE 2000/02/17 | MATERIAL NO. SD35572.DGN | DOCUMENT NO. SD-35572-001 | SHEET NO. 1 OF 01 | | | | | | | | | | | | | | | | | |